

# MONTHLY MEMBERSHIP PROGRESS REPORT

LOCATION AUSTRALIA

District 201V6

Results as of: 3/31/2023

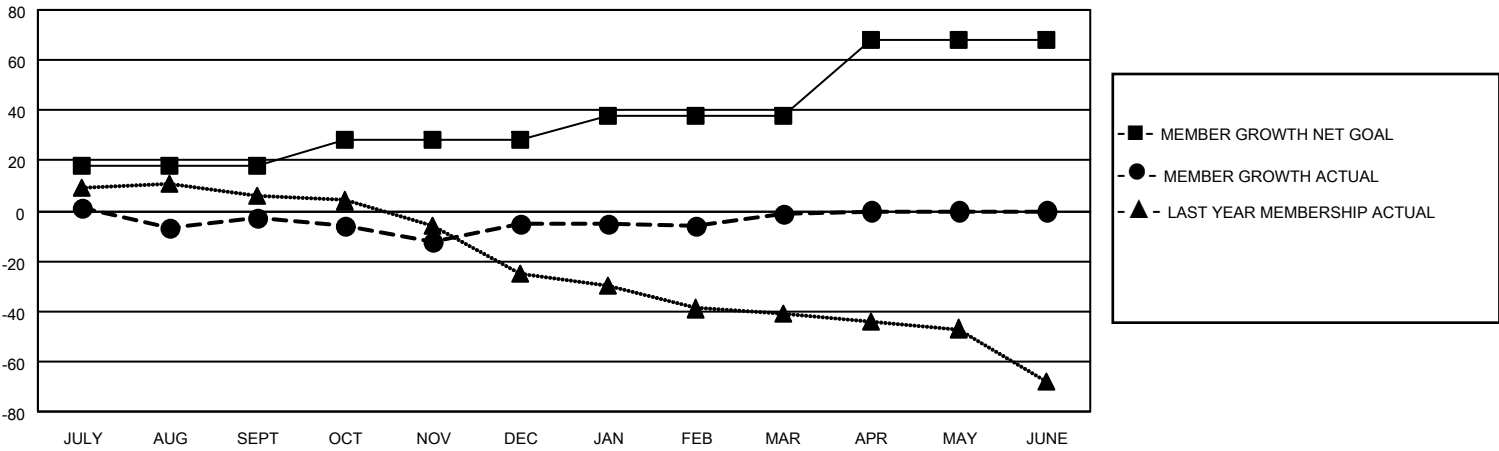
Clubs			
RESULTS FOR 2022-2023			
QUARTER	NEW CLUB GOAL	NEW CLUBS	DROPPED CLUBS
JULY/AUG/SEPT	0	0	0
OCT/NOV/DEC	0	0	0
JAN/FEB/MAR	1	0	0
APR/MAY/JUNE	0	0	0

Members			
RESULTS FOR 2022-2023			
QUARTER	MEMBER GROWTH NET GOAL	MEMBER GROWTH ACTUAL	DROPPED MEMBERS ACTUAL (including transfers)
JULY/AUG/SEPT	18	15	16
OCT/NOV/DEC	10	30	30
JAN/FEB/MAR	10	17	13
APR/MAY/JUNE	30	0	0

**GOALS AND ACTUAL NEW CLUBS CUMULATIVE**



**GOALS AND ACTUAL MEMBERS CUMULATIVE**



DROPPED CLUBS: 0	
<u>DROPPED MEMBERS</u>	
DECEASED	18
CLUB CANCELLED	0
OTHER	41
<b>TOTAL</b>	<b>59</b>

29 CLUBS OF 55 ADDED 1 OR MORE NEW MEMBERS

[CLICK HERE FOR CUMULATIVE MEMBERSHIP DATA](#)

<u>GENDER DISTRIBUTION</u>	
MALE	721 (67.38%)
FEMALE	348 (32.52%)
NON BINARY	0 (0.00%)
PREFER NOT TO ANSWER	1 (0.09%)
TOTAL FAMILY UNIT MEMBERS	
	136
FAMILY MEMBERS PAYING HALF DUES	
	68